



The Norwich University
GUIDE
to Online Graduate Programs

MBA

Master of
Business
Administration

MSIA

Master of
Science in
Information
Assurance

MJA

Master of
Justice
Administration

MA

Master of
Arts in
Diplomacy



MBA

MSIA

MJA

MA

184 years of academic heritage, decades of servicing adult distance learners, and the highest form of accreditation a university can receive provide one of the most solid foundations you could ever find for an online graduate program.

Unique program structure and pace provide you with a degree in **less than two years**—all the while experiencing classroom community and participation like you never have before, even in traditional classrooms.

This is an institution of great history, substance, and pride, and you will be honored to become a member of its prolific alumni.

When you become part of Norwich University, you become part of something very old, very deep, and very proud.

We invite you to join our tradition.



NORWICH UNIVERSITY

Founded in 1819



MBA

MSIA

MJA

MA

www3.norwich.edu/grad



This guide outlines the critical elements that all our online graduate programs have in common. More specific details about each degree can be found on our website or in the individual brochure for each graduate program.

ONLINE GRADUATE PROGRAMS

Master of Business Administration

This MBA program boasts one of the highest retention rates in the nation, owing to its fine faculty, great students, and engaging, well-organized curriculum. Curriculum is highly customizable to your own workplace or professional need.

Master of Science in Information Assurance

Information assurance (security) is one of the fastest-growing areas in information technology management. The cutting-edge coursework is taught by faculty members who are some of the most recognized experts across the field of information security. Learn about threats and vulnerabilities, prevention, detection, response, and management aspects of security.

Master of Justice Administration

A unique approach to justice education, the MJA combines highly desired Public Administration topics with those specific to the criminal justice system. This program provides law enforcement, adjudication, corrections and security professionals with the education, training, and skills needed to be an effective manager, policy maker, and leader.

Master of Arts in Diplomacy

You will enjoy this academic investigation into some of the most important topics our world faces today. Theories behind international relations, international law, the world economy, international conflict—its management and its resolution, terrorism, and post-conflict nation building all come to life for you—the internationally-minded student.

**This is not a dot.com
university.**

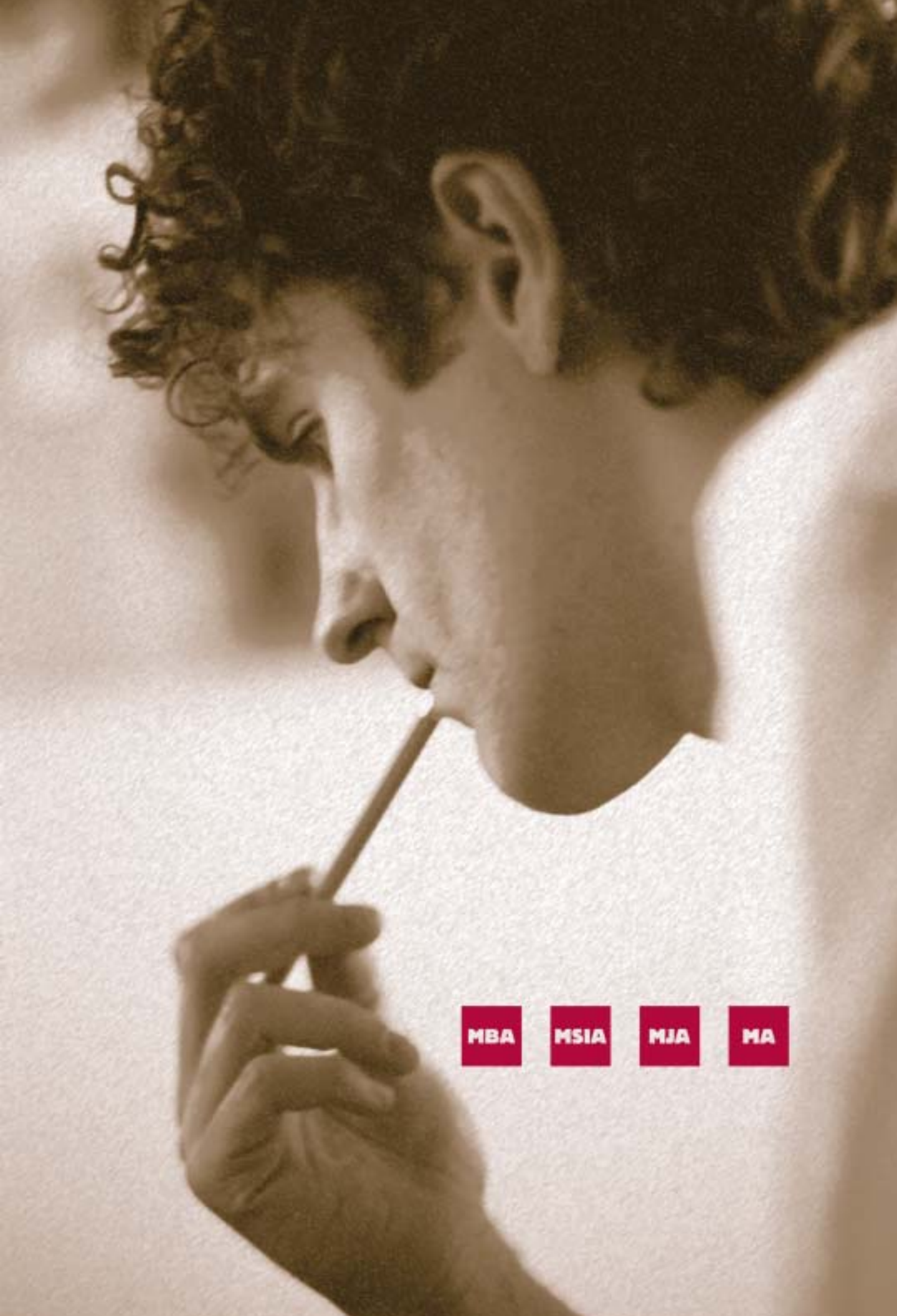


**Become affiliated with an
institution of innovation,
heritage, pride, and tradition.**

Tradition runs deep at Norwich and the alumni are a veritable who's who in the business and military history of this country. Norwich University was founded on innovative educational techniques and has continued to outpace the academic world in the delivery of education since 1819. Our online master's degrees are built on the strong Norwich tradition of innovation. When you become part of Norwich, you become part of something very old, very deep, and very proud. Few online programs can make such claims.

**Ultimate Educational
Convenience—Coursework
Built Around your Schedule.**

Created with your busy schedule in mind, these programs eliminate the constraints imposed by scheduled meeting times and specific classroom locations. The Norwich online masters programs are conveniently accessible to you any time, any place, no matter what your schedule. Students and instructors on five continents currently participate in the graduate programs.



MBA

MSIA

MJA

MA

This is substance.



A Graduate Degree in Less Than Two Years—not Five.

Whether you consider yourself a full-time or part-time student, you will finish 36 credits of coursework, attend the one-week residency, graduate, and become a member of a prolific alumni in less than two years—all at a proven pace for busy professionals. Do you have 12-18 hours per week? If so, less than two years from now you will have your Master's degree.

Customized Curriculum.

Individual workplace projects throughout the 36 credits force you to learn from your own workplace environment. Norwich University brought experiential learning to US education in 1819. This curriculum is highly customized, coordinated, and seamless. Specific tracks are available to help you further customize your learning experience.

Accreditation.

Norwich University is fully accredited by the New England Association of Schools and Colleges, Inc. (NEASC), a regional accrediting body. Regional accreditation is the highest form of accreditation that an institution can receive.

Affordable.

Tuition is set at the market average—a real value considering Norwich's heritage and quality. And, most employers provide a portion or all of your costs.

A group of seven business professionals in dark suits and dresses are silhouetted against a bright, hazy background. They are standing on a surface that resembles a complex circuit board, with intricate patterns of lines and circular components visible in the foreground. The overall color palette is a mix of dark greys, blacks, and warm, golden-brown tones from the background light.

MBA

MSIA

MJA

MA

**Norwich University
provides a fresh
and innovative
approach to
Master's education.**

**PREREQUISITES
(IF NEEDED)**

**12 CREDITS IN
6 MONTHS**

**COURSEWORK
(REQUIRED)**

**36 CREDITS IN
18 MONTHS**

**RESIDENCY
(REQUIRED)**

**ONE WEEK IN
VERMONT**

**CERTIFICATE OF
ADVANCED GRADUATE
STUDIES
(OPTIONAL)**

**12 CREDITS IN
6 MONTHS**

PROGRAM STRUCTURE

Making course selection easy. 36 credits of coursework are split up into six, six-credit seminars, appropriately named Seminars 1-6. Seminars last about eleven weeks. Every student follows the same path through the program, taking Seminar 1 through 6 in progression, then on to a one-week residency. There are two start dates: September or January.

A pace designed specifically for busy professionals. Online coursework takes between 12 and 18 hours per week, providing a pace that both part-time and full-time students can manage. Our extensive online experience has proven that you can handle this load. We have students from nearly every walk of life: traveling salespeople, busy IT executives, working mothers, and military personnel constantly being assigned. If they can do it, so can you.

You travel through the program with the same group of students. Unlike other graduate programs having students with scattered schedules, you are combined into a group of approximately 12 students, known as a cohort. You will have a chance to develop very close friendships and business relationships with the other students in your cohort as you travel through the entire program together. The community created in this system is real.

Coursework customized to your own workplace. Assignments are tailored to your experience and your own industry. Tracks and Certificates of Advanced Graduate Study provide additional expertise in exciting, relevant areas.

Capstone residency experience. The coursework is followed by a one-week residency and graduation at Norwich. There is no nicer place to be in the summer than the Green Mountains of Vermont. Primary residency costs, including travel, are included in tuition.

Where are you going to find a Master's Program with an average class size of twelve?

That's what we call personal attention—from highly qualified instructors.



100% DISTANCE IS 100% CONVENIENCE

Earn your online master's degree any time, any place. Distance education offers a uniquely flexible mode of study. You attend virtual seminars, student forums, and asynchronous discussion groups, all without leaving the comfort of your own home.

You go to work, and then you go home and have dinner with the family. No catching a burger on the way to night classes. You spend the weekends with the family, not in class.

When it is convenient, you log into the class web site and get your assignments.

When it is convenient, you log on and submit your completed assignments.

When it is convenient, you add your comments to the discussion area. The only traveling you will do comes at the end when you will travel to Norwich University for a one-week residency.



PROGRAM RESIDENCY

At the end of the 36 credits of coursework, all students converge on the campus of Norwich University for a one-week residency and graduation. The trip occurs at the end of June each year, one of the best times for a getaway to Northern New England and the Green Mountains of Vermont.

Students participate in a variety of group activities designed to bring together the concepts they have studied for eighteen months. Nationally-known speakers and futurists dot the itinerary, providing students with the academic stimulus needed to move their education from present to future mode. Students relax with professors and students from their cohorts, cementing life-long friendships and business acquaintances. The week ends with a graduation ceremony complete with hooding.

Family members are invited to attend, and day tours are organized for their enjoyment. Students are encouraged to bookend their residency with a family vacation. Vermont is a beautiful place to be in June.

CUSTOMIZING YOUR DEGREE

Individual workplace assignments. Every program forces you to apply the concepts learned on a weekly basis to your own profession, your own workplace, your own boss, and your own competition. Many programs require a major individual workplace project in each seminar. Not only does this help you learn quicker, it also allows you to immediately have an impact on your workplace.

Profession-specific Content Tracks. Every program provides profession-specific content within the seminars themselves. This allows students to learn within the context of their own industry or demographic group. Few graduate programs provide this type of context.

Certificates of Advanced Graduate Study (CAGS): Each graduate program is augmented with seminars that explore specific topics relevant to today's fast-changing environment. These twelve-credit areas are referred to as Advanced Graduate Study, and you are rewarded with a Certificate of same upon their completion.

Context is the operative word for efficient learning.

Providing learning opportunities within one's own workplace or field generates quicker and longer-lasting learning.

It is this context that Norwich University brought to education back in 1819. Alden Partridge, founder of Norwich University, based his teaching methods on building context through experiential learning, believing that students learned more by doing than by simply reading. His methods were innovative to say the least, and they continue at Norwich today.



A "normal" week might go as follows:

Monday. Log into the classroom and retrieve the assignment for this week. Download the text chapter needed. Look at the comments left behind by your classmates concerning this week's discussion topic. Make a few comments yourself. Take out the text and get the reading done. Take out the computer and start to write your assignment for the week.

Tuesday. Start the computer, finish the written assignment. Take a few minutes to think about this week's discussion topic. Log into the classroom and deposit your comments and finished assignment. Make a few changes and remarks, upload the file.

Wednesday. You're thinking about how the textbook reading and the case study relate to your own workplace. Next week you have to submit a short outline of how you will apply these principles to the reality of your workplace. Make a few notes to discuss with your boss tomorrow.

Thursday. Work all day, get home at 6:30, eat dinner with the family. About 7:30 you fire up the notebook, connect to the library, and search the online databases for the full-text articles you will need to prove your point in the case study. Download the articles to your team's online discussion area. At 9:00 tuck the kids in bed. Modify your team's outline for the case study, chide several of your teammates in the process, and log out.

Friday. Day off. Relax, knowing you are ahead in your work.

Saturday. Get up about 9:30, drink some coffee, then turn on the computer. You've been thinking about how these principles apply to work all week. Now you're ready to write the outline. Finish up in a couple of hours, log in to the classroom, deposit the outline for the professor's review, and see if there are any comments left over from your teammates' review of the case study outline. Make a few of your own and log out. Work for this week is done.

COURSE DYNAMICS





MEASURES OF ONLINE PROGRAM QUALITY

Accreditation. Ask if the university sponsoring the online program is regionally accredited. Regional accreditation is the highest form of accreditation a university can receive. Don't settle for anything less.

Retention. The industry average is 67%. The Norwich average is 93%. We engage our students. We have great instructors. We have great technical support. We have great curriculum. We have great students.

Library. One way to differentiate online masters' programs is by the breadth and quality of their online libraries. This program gives you unparalleled access to the most prolific databases available in education. All you need is right here—one click away.

Instructor Quality. Ph.D.'s develop all courses in conjunction with industry experts. Class instructors are Executive VPs and above from industry or Ph.D.'s in the field. You are learning from those who are making things happen.

Technical Support. Connectivity and navigation problems can kill an online experience. Norwich's classrooms are hosted by the largest host of online classrooms in North America. We offer 24/7 technical support and assign one Norwich Assistant Director to your classroom for constant monitoring of the student experience.



RETENTION AS A MEASURE OF SUCCESS

If you want to really test the metal of an online program, ask them about retention. You see, the problem with online education is that it can be faceless, boring, and unengaging. As a result, most online programs only have a 60-70% student retention rate.

Norwich University's online graduate programs boast a rate between 90 and 95%. This is among the best, if not the best, in the online industry.

Why is our retention rate so high?

- **Our curriculum is customized** to your needs, your workplace, and your industry. This helps you learn faster and keeps the curriculum interesting.
- **We have found a pace that works** for busy professionals. Do you have 12-18 hours per week? If you do, you will receive a Master's degree in less than two years. That is a lot quicker than the four to five years it will take you in most other residential programs.
- **People like being a part of something of substance.** Norwich has 184 years of academic heritage and a prolific, proud alumni base. Our students like belonging to such an institution.
- **We have virtual classrooms that are dynamic and consistent.** No big surprises in structure or assignments as you move from seminar to seminar.
- **Our instructors are chosen from literally hundreds of applications.** They are industry leaders who like to share their experiences with students. They are responsive and knowledgeable, or they don't teach for us.
- **We have technical support that is second to none.** 24/7 we have cordial people who know how to keep you connected and productive.
- **We listen to our students.** Feedback is useless unless it is current and you act on it. We monitor these classrooms, making sure your experience is positive. Your feedback is early, often, and results in changes.
- **We have a dynamic on-campus, one-week residency.** Who wouldn't want to go to Vermont for a week?

Norwich is usually first, never last, but always lasting.

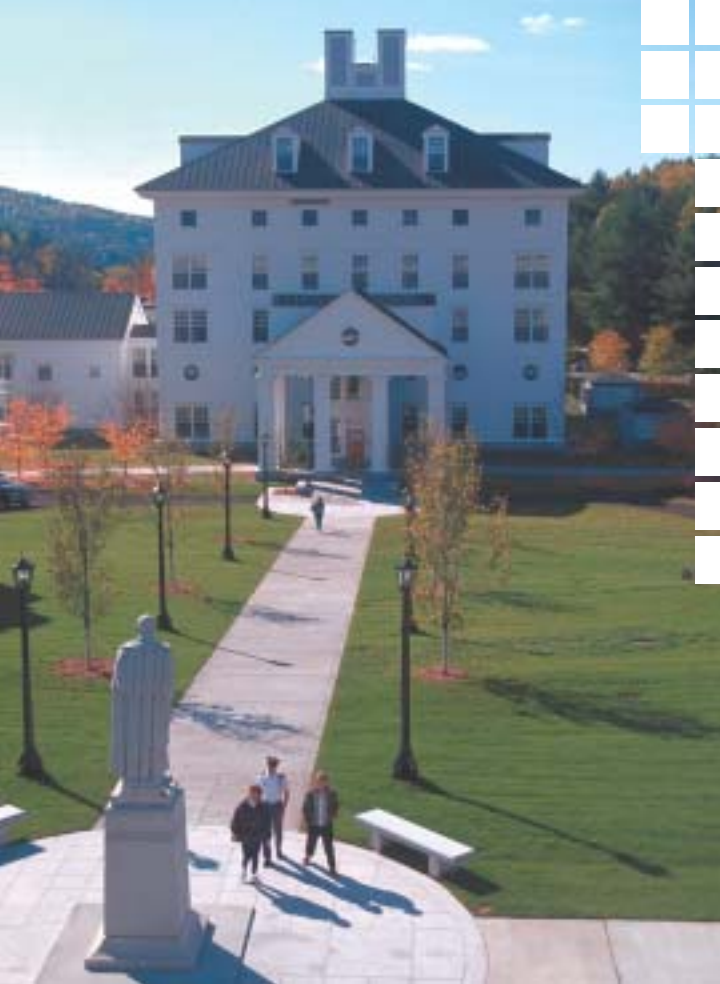


Established in 1819, Norwich University is a quality professional school with a strong liberal arts component. Our 1600 undergraduate students choose either a military lifestyle as part of the Corps of Cadets or a traditional college lifestyle. Norwich is known for her dedicated, teaching faculty and maintains one of the lowest student to faculty ratios in the industry. The campus is located in Northfield, Vermont in the heart of the Green Mountains, truly one of the most beautiful locations in the world for a college campus. The combination of quality professional education, broad studies in the liberal arts, dedicated faculty, and the leadership laboratory supplied by the Corps of Cadets has generated a legacy not found in many corners of the educational map. Norwich is a very proud place and maintains deep bonds with its alumni.

Norwich is steeped in a dynamic mixture of tradition and innovation.

WHAT IS NORWICH UNIVERSITY?

- Norwich was the first private engineering college in the nation.
- Norwich was the first private military academy in the nation.
- Norwich was the birthplace of ROTC.
- Norwich's Corps of Cadets was the first to accept women, thirty years before the academies.
- Norwich's founder, Alden Partridge, brought experiential learning to US education. It took others nearly a century to do so.
- Norwich University was one of the first military academies to introduce traditional students onto its campus—and very successfully.
- Norwich alumni are a veritable Who's Who in the business and military history of this country, richly rewarding their alma mater with a wonderful endowment of facilities and teaching tools.



UNDERGRADUATE PROGRAMS

Corps of Cadets. Whether military bound or not, the Norwich University Corps of Cadets offers traditional-aged college students a chance to live the military lifestyle. Whether a student chooses the Corps of Cadets or a traditional college student lifestyle, the undergraduate campus in Northfield provides one of the most exciting and richest campus environments in the world.

Traditional Students. Almost half of our resident undergraduates are non-military lifestyle. They chose Norwich University for its fine academic programs or because of the dynamic nature of the campus. Corps and traditional students mix in classroom, sports, and campus activities.

The primary academic majors at the undergraduate level are:

Engineering. The first private engineering school in the nation, the David Crawford School of Engineering is in the process of a major expansion. Computer, Electrical, Civil, and Mechanical Engineering form the curriculum.

Business. Occupying the most prestigious building on campus, Dewey Hall, the Business School supports Management, Computer Science, Computer Information Systems, and Accounting majors.

Architecture. The most recent addition to the professional collection, the Architecture school is gaining notoriety nationwide for its quality graduates. This school also offers a five-year residential Master's option.

Criminal Justice. The largest population of students on campus, Norwich is quickly becoming the center of Criminal Justice education in the Northeast.

In addition to the above, a significant number of students major in History, Political Science, Psychology, Nursing, and Sports Medicine. Norwich hosts over thirty undergraduate majors in all.



ENROLLMENT CALENDAR

Program Start Dates: September and January

Students may join the program in September or January. Individual seminars for the September cohort begin in September, December, March, and June. Individual seminars for the January cohort begin in January, April, July, and October.

Application Dates: July 1 and November 1

Applications and associated documentation must be in the Norwich online graduate programs office no later than two months prior to the start of a new semester. If you plan to enroll in September, your completed application and all documentation must arrive by July 1. If you plan to enroll in January, your completed application and documentation must arrive no later than November 1.

Payment Dates

Once accepted to the program, a \$250 advance deposit is required to secure your place in the cohort.

Prerequisite Seminars

Prerequisite Seminars start on March 1 and July 15. If you have this background already, you can jump right into the graduate coursework.



BA/BS Degree. In order to apply to our online graduate programs, you must have completed a Bachelor of Arts or a Bachelor of Sciences degree from an accredited institution. Official transcripts are required.

Undergraduate GPA. A minimum undergraduate GPA of approximately 2.70 is required for all students. Engineers and other technical professionals may apply with an undergraduate GPA of at least 2.40. Candidates with GPAs below these floors will be handled on a case-by-case basis and will be required to take the GMAT or GRE.

Graduate Testing. The traditional GMAT and GRE exams are waived for all candidates meeting the undergraduate GPA requirements, or for students who have successfully completed graduate level courses at another regionally accredited institution.

TOEFL. Students whose native language is other than English must submit an official TOEFL score of 550 or above.

References. References must be provided from three individuals who can attest to your level of self-motivation, time management, and character. One of those recommendations must come from your employer/superior.

Prerequisite Coursework. Each graduate program requires a prerequisite body of knowledge that a student must attain prior to entering the program. In most cases, students acquire that knowledge within the scope of their undergraduate degree. Check the specific program brochures or website for a complete listing of prerequisite coursework for each program.

Work Experience. It is preferred that candidates have at least two years of work experience before their first seminar. The maturity and discipline that comes along with work experience is vital to success in an online program. Candidates with less than two years will be handled on a case-by-case basis.

Transfer Credits. On a case-by-case basis, we will assess and award transfer credit. Please check the specific program brochures or website for further information.

Beyond these general admissions requirements, there are some minor differences in the admissions process between degree programs. You will be made aware of any additional requirements for your program at the point of application.



HOW DO I APPLY?

Online. The easiest way to get more information is to go to www3.norwich.edu/grad. Dates for upcoming cohorts and up-to-date tuition information are provided for each graduate program. You may also request additional program information or apply online.

Telephone. If you would rather speak with someone directly, call (800) NU-ONLINE (800-686-6546), and we will be glad to chat for as long as you need. We'll even take your application over the phone.

GETTING STARTED ONLINE

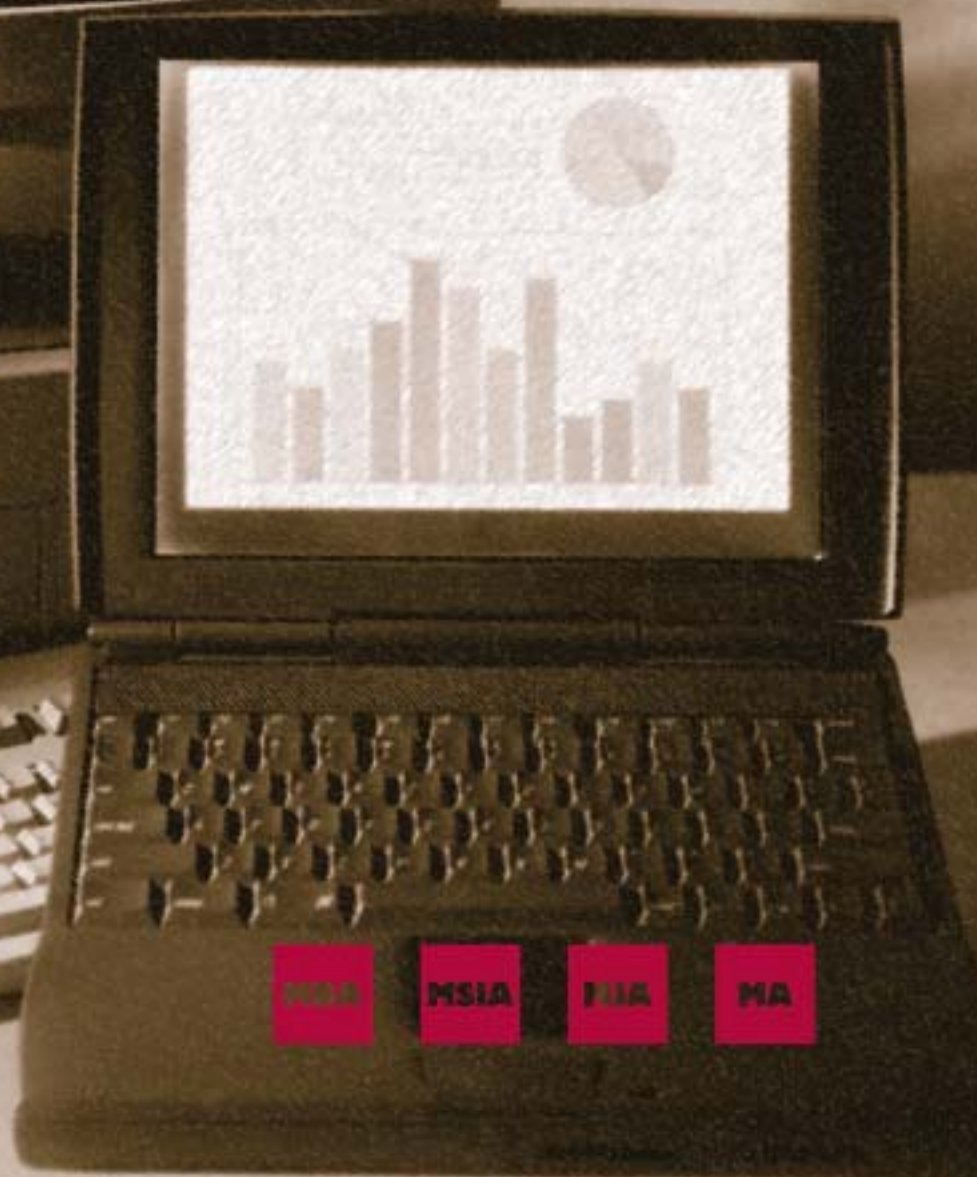
Once you have been accepted to the program, you will receive an acceptance letter and request to provide a deposit securing your place in the upcoming cohort.

Pay. You may pay your deposit and subsequent tuition payment online, by phone, or by mail. Financial aid in the form of loans is available.

Get your password. You will receive a password and log on information to access the virtual campus approximately two weeks prior to the beginning of the first seminar.

Meet your professor. Your professor will contact you by phone, then via email.

Now you're ready to start the seminar. Reading assignments will be spread throughout each 11-week seminar, and asynchronous discussions and written communication in the form of papers and briefs will keep you intellectually engaged throughout the online master's program. Work groups and simulation project-teams will be formed throughout various seminars to assist you in the learning process.



MSA

MSIA

MIA

MA

MBA

MSIA

MJA

MA

**Online Graduate
Programs**

www3.norwich.edu/grad
(800) NU-ONLINE

Norwich University
158 Harmon Drive
Northfield, VT 05663



NORWICH UNIVERSITY

Founded in 1819